

# LUNCH 午餐菜单

Includes : Assorted Vegetables, Rice or Noodle, Dessert 時令綜合菜盤, 米飯或麵條, 甜品

## LIMITED MENU 限量版商品

Matsusaka Beef Shabu-shabu or Sukiyaki  
松阪和牛 涮鍋或壽喜燒

120g ¥7,480

160g ¥9,460



## BASIC MENU 基本菜单

Shabu-shabu Beef & Pork 涮鍋 / 和牛, 猪



Matsusaka Beef 40g & Yonezawa Pork 80g ¥ 5,060

Matsusaka Beef 80g & Yonezawa Pork 80g ¥ 7,040

Matsusaka Beef 120g & Yonezawa Pork 80g ¥ 8,580

Yamagata Beef 40g & Yonezawa Pork 80g ¥ 2,530

Yamagata Beef 80g & Yonezawa Pork 80g ¥ 3,740

Yamagata Beef 120g & Yonezawa Pork 80g ¥ 4,730

Japanese Beef 40g & Yonezawa Pork 80g ¥ 2,090

Japanese Beef 80g & Yonezawa Pork 80g ¥ 2,640

Japanese Beef 120g & Yonezawa Pork 80g ¥ 3,190

Shabu-shabu Beef 涮鍋 / 和牛



Yamagata Beef 120g ¥ 4,070

Yamagata Beef 160g ¥ 5,170

Yamagata Beef 200g ¥ 6,160

Matsusaka Beef Lean 120g ¥ 3,850

Matsusaka Beef Lean 160g ¥ 4,620

Matsusaka Beef Lean 200g ¥ 5,390

Japanese Beef 120g ¥ 2,860

Japanese Beef 160g ¥ 3,410

Japanese Beef 200g ¥ 3,740

Shabu-shabu Pork 涮鍋 / 猪



Yonezawa Pork 100g ¥ 1,760

Yonezawa Pork 150g ¥ 2,200

Yonezawa Pork 200g ¥ 2,640

Sukiyaki Beef 壽喜燒 / 和牛



Yamagata Beef 120g ¥ 4,290

Yamagata Beef 160g ¥ 5,390

Yamagata Beef 200g ¥ 6,380

Japanese Beef 120g ¥ 3,080

Japanese Beef 160g ¥ 3,630

Japanese Beef 200g ¥ 3,960

## SIGNATURE 招牌菜



### Japanese beef hand-rolled sushi 和牛手捲壽司

¥ 2,640

Japanese beef and Crab ————— 2 pieces  
和牛和蟹

Japanese beef and and Salmon roe — 1 pieces  
和牛和鮭魚子

## VEGETABLES 蔬菜

### Assorted vegetables

時令綜合菜盤

※Vegetable changes depending on the season. (※蔬菜因季节而异)

add ¥ 550

## ADDITIONAL 单点

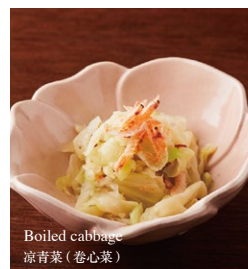
### Meat

Kobe Beef 神戸和牛	1slice	¥4,290
Matsusaka Beef 松阪和牛	1slice	¥2,200
Yamagata Beef 山形和牛	1slice	¥1,650
Matsusaka Beef Lean 松阪牛赤身肉	60g	¥1,760
Japanese Beef Plate 和牛拼盘	120g	¥7,370
※ Kobe Beef, Matsusaka Beef, Yamagata Beef ...40g each		
※ 神戸牛肉, 松阪牛肉, 黑毛和牛 ...每个 40 克。		
Yonezawa Pork 米泽猪肉	5slice	¥770

### Seafood

Luxury Seafood Plate 海鲜拼盘	( King crab / SnowCrab 帝王蟹 / 鱈場蟹 2pieces / 2pieces Prawn / Scallop 無頭蝦 / 扇贝 4pieces / 4pieces )	¥ 9,680
Snow Crab & Prawn Plate	( Snow Crab / Prawn 鱈場蟹 / 無頭蝦 3pieces / 3pieces )	¥ 2,420
King crab 帝王蟹	3 pieces	¥ 5,280
Snow crab 鱈場蟹	3 pieces	¥1,980
Prawn 無頭蝦	6 pieces	¥1,320
Scallop 扇贝	4 pieces	¥1,760
Wakame (Seaweed) 裙带菜		¥495

## APPETIZER 開胃前菜



Boiled cabbage  
涼青菜 (卷心菜)

Seasonal appetizers  
時令開胃前菜 ¥440



Tomato salad  
番茄沙拉 ¥495



Steamed Egg Custard  
茶碗蒸 ¥495



Crab Soybean Tofu  
蟹肉水豆腐 ¥495

## DESSERT 甜品



Green tea affogato ¥ 605

抹茶的阿福守卫

Serve matcha ice cream with hot matcha sauce.  
If desired, add 2 spoons of matcha powder  
to the matcha sauce and stir to taste.  
The bitterness of the matcha combined with the  
sweetness of the ice cream makes an exquisite dish.



Dorayaki ¥ 605

銅鑼燒

Enjoy the soft and fluffy dorayaki dough with  
fresh cream and strawberries.



A sweet red bean soup ¥ 605  
红豆甜汤



Almond jelly ¥ 605  
杏仁豆腐



Seasonal sherbet ¥ 495  
季节性冰糕